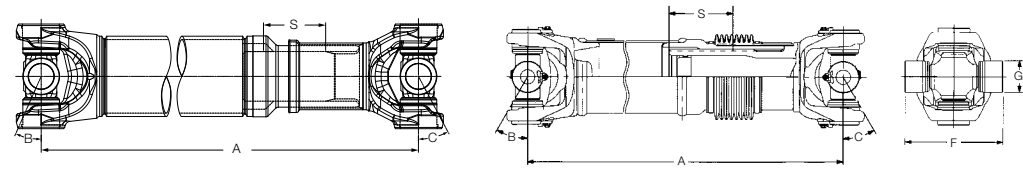


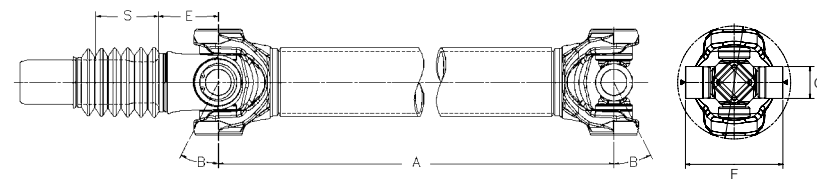
Spicer Life® Series – Heavy-Duty Driveshafts Specifications



Spicer® Heavy-Duty SPL® – Main Driveshaft and Inter-Axle Shaft

Driveshaft Assembly Part Number	Minimum Length Collapsed Centerline to Centerline of Cross "A"		Slip Joint End			Tight Joint End			U-Joint Span "F"		Bearing Cup Diameter "G"	
			Slip "S"		Maximum Angle "B"	Tube Size		Maximum Angle "C"				
	mm	in	mm	in		mm	in		mm	in	mm	in
SPL® 140 140DS55007 SPL®140HD 140DS55001	430	16.93	110	4.33	25°	107.0 x 3.5 DOM	4.21 x .138 DOM	25°	139	5.46	49	1.93
SPL® 170 170DS55007C 170DS55007F	440	17.34	110	4.33	25°	126.0 x 3.0 DOM	4.96 x .118 DOM	25.5°	164	6.46	55	2.16
SPL® 170HD 170DS55011C 170DS55011F	440	17.34	110	4.33	25°	128.5 x 4.25 DOM	5.06 x .167 DOM	25°	164	6.46	55	2.16
SPL®170/A 170A55010C 170A55010F	528.6	20.81	150	5.91	45°	116.7 x 4.57 DOM	4.59 x .180 DOM	45°	164	6.46	55	2.16
SPL® 250 250DS55007C 250DS55007F	450.3	17.73	110	4.33	25°	128.5 x 4.25 DOM	5.06 x .167 DOM	25°	163	6.42	60	2.37
SPL® 250HD 250DS55011C 250DS55011F	450.3	17.73	110	4.33	25°	130.0 x 5.0 DOM	5.12 x .197 DOM	25°	163	6.42	60	2.37
SPL® 250 I/A 250IA55001C 250IA55001F	507.7	19.99	150	5.91	45°	128.5 x 4.25 DOM	5.06 x .167 DOM	45°	163	6.42	60	2.37
SPL® 350 350DS55001 350DS55001F	483	19.01	110	4.33	15°	138.5 x 4.25 DOM	5.45 x .167 DOM	15°	172	6.77	65	2.56
SPL® 350HD 350DS55002 350DS55002F						140.0 x 5.0 DOM	5.51 x .197 DOM					

For additional configurations, contact Spicer Driveshaft Engineering for specific application information.



Warranty Information
Contact your OEM for warranty coverage.

Spicer® Heavy-Duty SPL® 350 Lite – Slip Between Center Driveshaft

Driveshaft Assembly Part Number	Minimum Length Centerline of Cross to Centerline of Cross "A"		Maximum Angle "B"	Tube Size		Slip "S"		Centerline of Cross to Shoulder of Yoke Shaft "E"		U-Joint Span "F"		Bearing Cup Diameter "G"	
				mm	in	mm	in	mm	in	mm	in	mm	in
	mm	in	mm	in	mm	in	mm	in	mm	in	mm	in	
SPL® 350 Lite 350DS85001 350DS85001F	290.5	11.44	27°	118.4 x 5.2	4.66 x .205	110	4.33	105	4.13	172	6.77	65	2.56
SPL® 350 Lite HT 350DS85002 350DS85002F				120.2 x 6.0	4.73 x .236								

For additional configurations, contact Spicer Driveshaft Engineering for specific application information.

Spicer® Heavy-Duty SPL® Series Main Driveshaft and Inter-Axle Shaft

Engineered to supply greater torque, durability, and savings for severe-duty and low-emission, high-efficiency trucks.
SPL® 170, SPL® 250, SPL® 350 Driveshaft



Dana Commercial Vehicle Driveline Technologies
3939 Technology Drive
Maumee, Ohio, USA 43537
dana.com/cv



The most comprehensive and efficient family of heavy-duty driveshafts and inter-axle shafts in the industry. Designed to eliminate restrictions on engine speeds and torque to support the fastest axle ratios in today's vehicles.

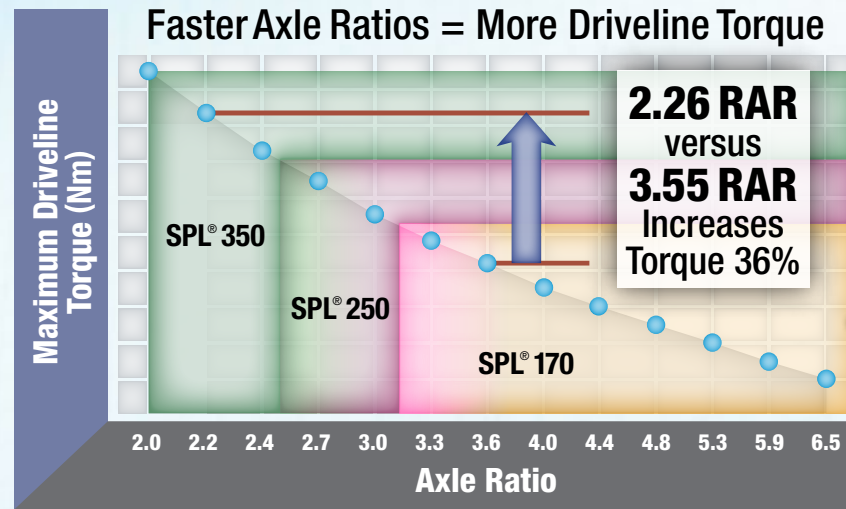


Application Policy
Capacity ratings, features, and specifications vary depending upon the model and type of service. Application approvals must be obtained from Dana; contact your representative for application approval. We reserve the right to change or modify our product specifications, configurations, or dimensions at any time without notice.

Engineering Driveshafts for Lower RPMs

The movement toward engine downspeaking has been accelerating since the first fuel-efficiency standards for new heavy-duty trucks were issued, and these efforts have intensified as OEMs and fleet managers continue to demand maximum vehicle performance.

While engine downspeaking offers increased fuel economy and decreased emissions, the **faster axle ratios** needed to accommodate the **lower RPMs** result in **additional torque** in the drivetrain, placing much **higher stresses** on the main driveshaft, axles, and inter-axle shaft.

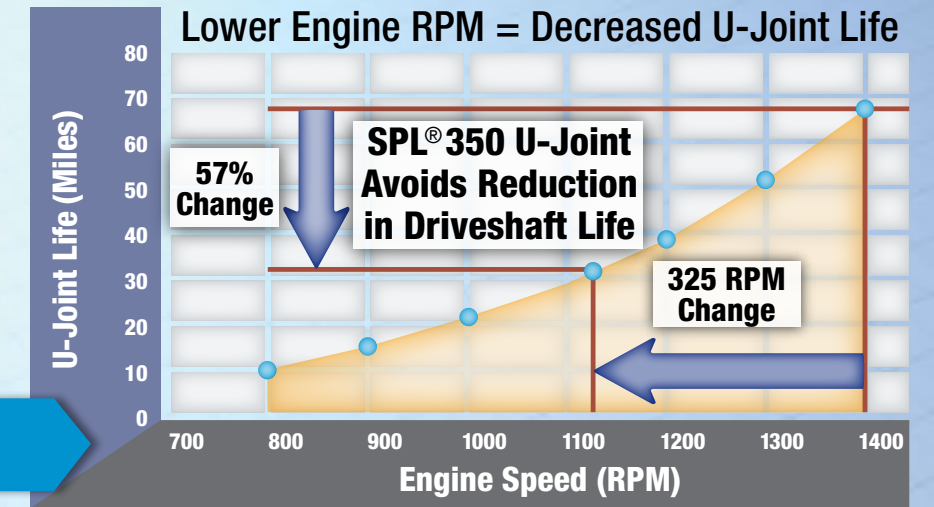


SPL® 350 U-Joint Puts the Life into Downspeaking Applications

The *right* driveshaft and inter-axle shafts with **robust and durable components** can **handle the added input torque** with even **greater reliability**. That's why Dana engineered the Spicer Life® Series to **accommodate faster axle ratios** without sacrificing life.

The Impact of Axle Ratios on Driveline Torque

Lower Engine Speeds Demand the Most Durable U-Joints



Better performance. Longer life. Lower operating costs.

We've set the standard – so you can enjoy the advantages.

Spicer Life® Series U-Joints and Driveshafts

The Spicer® family of heavy-duty U-joints extends the life of the drivetrain and can eliminate restrictions on engine speed and torque in today's Class 8 linehaul and vocational vehicles. Dana was first to market and offers more options to meet the needs of today's high-efficiency trucks with added long-term reliability.

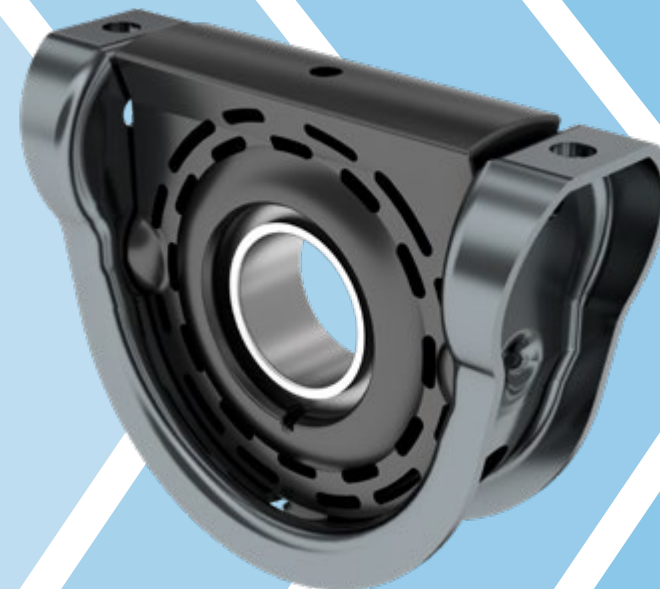
Benefits
Optimized torque-carrying capability to meet vehicle demands
Service-free option provides a maintenance-free product
Completely interchangeable with relubeable products to reduce service parts
Smaller packaging allows for greater flexibility among driveshaft configurations
Industry leader providing broadest range of products to meet your requirements



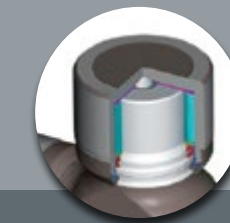
Spicer® SPL® Series Dura-Tune® Center Bearing

The Spicer Dura-Tune center bearing is engineered for durability and tuned to provide industry-leading powertrain vibration isolation and dampening.

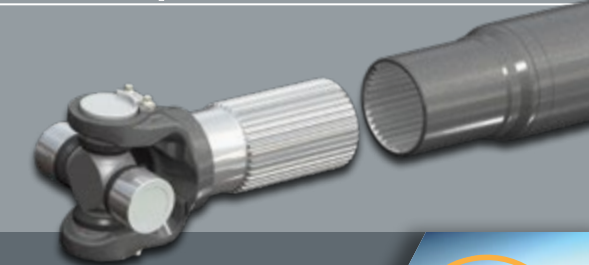
- Patented design ensures proper cushion alignment for the life of the vehicle
- Easy-fit, trouble-free installation, reducing future alignment-related issues
- Reduces driver fatigue
- Available on standard SPL driveshafts and Spicer 10 Series® driveshaft assemblies
- Universal design for OE and aftermarket



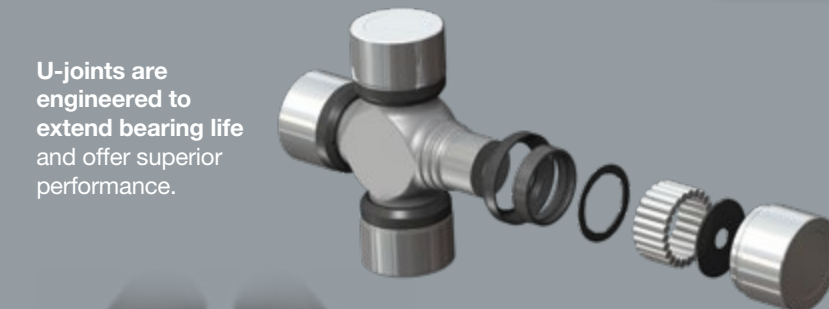
Features and Options



Optional permanently lubricated u-joint with extended warranty requires no lubrication for the life of the product.



Permanently lubricated slip spline protects against contaminants and eliminates maintenance.



U-joints are engineered to extend bearing life and offer superior performance.

Increased tube diameter and decreased wall thickness offer greater strength without the weight, enabling greater load capacity.